

CONCORDIA UNIVERSITY ANN ARBOR

THE YEAR IN FACTS

Concordia University Ann Arbor, 2020-21

Contents

CUAA AT- A-GLANCE 2020-21.....	2
Calculated Full-Time Equivalent Enrollment.....	2
Enrollment by College of Study 2019-20.....	3
Top 20 Undergraduate Programs Ranked by 2020 Enrollment.....	4
Top Undergraduate Programs by College by 2020 Enrollment.....	4
Enrollment Trends by Level, Full/Part Time, and Ethnicity.....	5
Enrollment by Pell Eligibility and First Generation.....	6
Religious Affiliation by Student Level Type in 2019-20.....	6
New Freshman Retention Next Fall.....	7
Enrollment by State.....	8
Enrollment by Country of Citizenship.....	9
Enrollment by Michigan County.....	10
Degrees Conferred by Academic Year, 2014 - Present.....	11
4-Year and 6-Year Graduation Rates.....	11
Student Feedback – All Graduate Survey Spring 2020.....	12

About the Report:

This report summarizes key information about Concordia University - Ann Arbor (CUAA), for public information and for internal use. It consists of:

- Snapshots: information about a particular point in time or an overview of one year
- Trends: information that shows multiple years

There are several ways that students are counted in this report:

- Fall Census Snapshot: a headcount early in the Fall semester (after drop /add) that captures all enrolled students as of that day. It is widely used in official external reporting, for instance to the National Center for Education Statistics (NCES).
- Unduplicated enrollment or “Distinct Students”: for a given academic year, any enrolled student is counted once (regardless of whether he/she is enrolled for one semester, two semesters, one session, etc.). This is an internal key performance indicator, and the best measure for how many students are served in a given year.
- FTE (full-time equivalent): a method for counting full-time and part-time students, weighting each based on credit hours. It is the method that comes closest to combining student and credits.

Dates and timeframes:

- Academic years are named for the calendar year at the end; e.g., “2020” refers to the year ending in mid-2020, and includes Fall 19 and Spring 20.
- Note that some data are available only after year end, so this report mostly summarizes the last full academic year. If data tables are available for the current year, they are labeled accordingly.

CUAA AT-A-GLANCE 2020-21

DEGREES & PROGRAMS (Fall 20)

Associate, Bachelor's, & Master's degrees. Schools of:

Arts and Science (BA, BS, MS)

Undergraduate majors: 19
Graduate programs: 2

Business: (BBA, MS-OLA, MBA)

Undergraduate majors: 15
Graduate programs: 18

Education: (BA, BS, MS)

Undergraduate majors: 5
Graduate programs: 5

Graduate/Certificate: 2

School of Health Professions

Undergraduate majors: 4
Graduate Programs: 2

Nursing (BSN)

Undergraduate major: 1

FACULTY (Fall 19)

56 full-time faculty

- o 32% LCMS
- o 45% female, 55% male
- o 72% with terminal degrees
- o 12% pursuing terminal degrees
- o 113 adjunct faculty
- o Student/Faculty ratio: 11 to 1

ENROLLMENT – Fall '19 Census

Traditional UG: 908
HS Dual Credit: 68
Graduate: 211
Total: 1,187

ADMISSIONS (Fall 2019)

New traditional undergraduates:
Average HS GPA: 3.25
Average ACT: 21

UNDERGRAD DEMOGRAPHICS

Female 54%
Male 46%
Minority 18%
LCMS 20%
All Lutheran 25%

FINANCIAL AID (2019-20)

Typically, >99% of new first-time, full-time students receive some form of financial assistance.

The average financial aid award for first-time, full-time freshman in Fall 2019 excluding loans was **\$19,114**.

STUDENT YEARLY COSTS (2019-20)

Undergraduate tuition... \$ 30,060
Room and Board..... \$ 10,830

TOP Undergrad MAJORS (2019-20)

Undergraduate

Nursing (BSN)
Sports/Ent Mgt
Justice/Public Policy
Biology
General Business

Undergrad Enrollment by College

28% School of Business
24% School of Nursing
24% School of Arts & Science
12% School of Education
2% School of Health Professions

ATHLETICS

Mascot: Cardinals

NAIA Affiliations

- Wolverine-Hoosier Athletic Conference
- Mid-States Football Association
- American College Hockey Association
- National Christian College Athletic Association (NCCAA)
- 25 Sports Offered (Esports added)
- 11 Men's, 11 Women's, 3 co-ed
- 54% of undergraduates participate in varsity athletics.

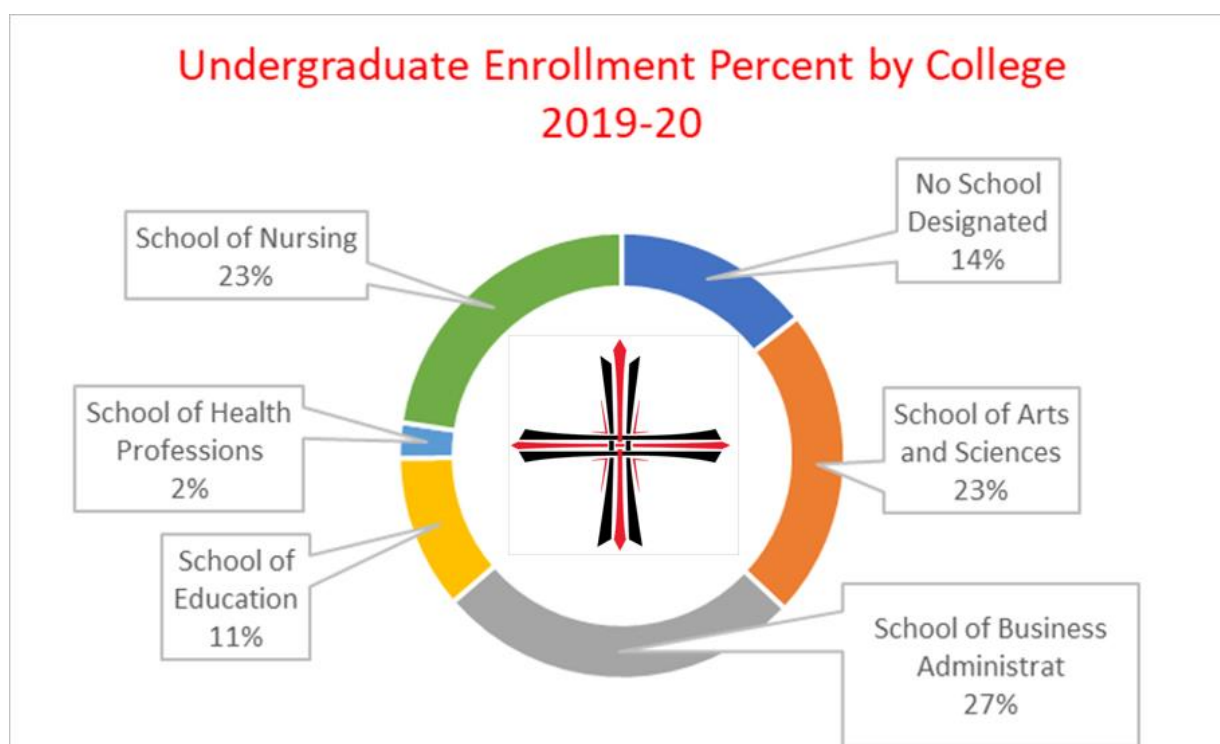


Calculated Full-Time Equivalent Enrollment

Student Level Type	2015	2016	2017	2018	2019	2020
Undergraduate	735	789	900	977	1,074	1,057
Traditional Undergraduate	664	634	794	878	992	936
Accelerated Undergraduate	51	44	7		1	
High School	35	112	99	99	81	121
Graduate/Professional	311	319	332	304	307	276
Accelerated Graduate	311	319	332	304	307	276
Total	1,045	1,108	1,232	1,279	1,380	1,328

Enrollment by College of Study 2019-20

CUAA Undergraduate	Total Students	% of Students	Credits Enrolled	% Credits
No School Designated	156	14.4%	1,153	4.4%
School of Arts and Sciences	245	22.6%	6,694	25.5%
School of Business Administrat	289	26.7%	7,887	30.1%
School of Education	121	11.2%	3,530	13.5%
School of Health Professions	28	2.6%	627	2.4%
School of Nursing	245	22.6%	6,319	24.1%
Total	1,084	100.0%	26,210	100.0%
CUAA Graduate	Total Students	% of Students	Credits Enrolled	% Credits
No School Designated	7	2.5%	24	0.9%
School of Arts and Sciences	11	4.0%	213	7.6%
School of Business Administrat	22	8.0%	237	8.5%
School of Education	236	85.5%	2,322	83.0%
Total	276	100.0%	2,796	100.0%



Top 20 Undergraduate Programs Ranked by 2020 Enrollment

College	Program	2017	2018	2019	2020
School of Nursing	Nursing (NURSING TRAD)	135	208	264	245
School of Business Administrat	Business-Sport and Entert Mgmt (BUS-SPRT MGT)	55	72	82	78
School of Business Administrat	Justice and Public Policy (JUST-PUBPOLI)	38	52	56	60
School of Arts and Sciences	Biology (BIOLOGY)	58	43	49	46
School of Business Administrat	Business-General Business (BUS-GEN-BUS)	23	33	39	43
School of Arts and Sciences	Exercise Science (EXERSCI)	48	34	36	37
School of Business Administrat	Business-Management (BUS-MANGMT)	32	34	26	32
School of Education	Family Life (FAMILYLIFE)	81	68	51	32
School of Arts and Sciences	Psychology (PSYCHOLOGY)	19	26	23	30
School of Arts and Sciences	Sports Med-Athletic Training (SM-ATH-TRAIN)	14	22	30	29
School of Business Administrat	Business-Marketing (BUS-MARKETNG)	33	32	27	23
School of Business Administrat	Business--Accounting (BUS-ACCOUNT)	16	17	19	22
School of Arts and Sciences	Computer Science (COMP-SCI)	19	24	29	21
School of Health Professions	Social Work (SOCIAL-WORK)	2	6	11	16
School of Business Administrat	Business-Finance (BUS-FINANCE)	14	11	12	15
School of Education	Elementary Education (ELEM-ED)	7	7	9	14
School of Education	Elementary Early Childhood (ELEMERLYAA)	-	-	-	13
School of Business Administrat	Business- Hospitality & Event (BUS-HOS EVNT)	5	12	10	12
School of Arts and Sciences	Music (MUSIC)	9	5	11	11
School of Arts and Sciences	Parish Music (PARISH-MUSIC)	3	2	9	10

Top Undergraduate Programs by College by 2020 Enrollment

School of Health Professions	2017	2018	2019	2020
Social Work	2	6	11	16
Diagnostic Medical Sonography	8	4	7	6
Radiology Technology	6	5	7	6

School of Nursing	2017	2018	2019	2020
Nursing BSN	135	208	264	245

School of Arts and Sciences	2017	2018	2019	2020
Biology	58	43	49	46
Exercise Science	48	34	36	37
Psychology	19	26	23	30
Sports Med-Athletic Training	14	22	30	29
Computer Science	19	24	29	21
Music	9	5	11	11
Parish Music	3	2	9	10

School of Business Administrat	2017	2018	2019	2020
Business-Sport and Entert Mgmt	55	72	82	78
Justice and Public Policy	38	52	56	60
Business-General Business	23	33	39	43
Business-Management	32	34	26	32
Business-Marketing	33	32	27	23
Business--Accounting	16	17	19	22
Business-Finance	14	11	12	15
Business- Hospitality & Event	5	12	10	12

School of Education	2017	2018	2019	2020
Family Life	81	68	51	32
Elementary Education	7	7	9	14
Elementary Early Childhood				13
Early Childhood Education	14	22	24	10
Elementary Special Education				10
Secondary Ed-English	5	5	10	10
Ed-Language Arts Elem Ed	15	10	13	9

Enrollment Trends by Level, Full/Part Time, and Ethnicity

12-Month Enrollment

Undergraduate/Graduate Splits		2015	2016	2017	2018	2019	2020
Undergraduate		735	789	900	977	1,074	1,057
Graduate/Professional		311	319	332	304	307	276
Total		1,045	1,108	1,232	1,279	1,380	1,328

2015	2016	2017	2018	2019	2020
70%	71%	73%	76%	78%	80%
30%	29%	27%	24%	22%	20%
100%	100%	100%	100%	100%	100%

Full Time/Part Time Splits

Student Level Type	Full Time/Part Time	2015	2016	2017	2018	2019	2020
Undergraduate	Full Time	615	609	752	820	932	888
Undergraduate	Part Time	233	286	234	264	278	334
Undergraduate	Total	735	789	900	977	1,074	1,057
Graduate/Professional	Full Time	71	91	92	107	123	124
Graduate/Professional	Part Time	277	272	287	243	235	216
Graduate/Professional	Total	311	319	332	304	307	276
Combined	Full Time	686	700	844	927	1,055	1,012
Combined	Part Time	510	558	521	507	513	550
Combined Distinct	Total	1,045	1,108	1,232	1,279	1,380	1,328

2015	2016	2017	2018	2019	2020
84%	77%	84%	84%	87%	84%
32%	36%	26%	27%	26%	32%
100%	100%	100%	100%	100%	100%
23%	29%	28%	35%	40%	45%
89%	85%	86%	80%	77%	78%
100%	100%	100%	100%	100%	100%
66%	63%	69%	72%	76%	76%
49%	50%	42%	40%	37%	41%
100.0%	100.0%	100.0%	100.0%	100.0%	100.0%

12-Month Enrollment Splits by Ethnicity - Undergraduate

Student Level Type	Ethnicity	2015	2016	2017	2018	2019	2020
Undergraduate	African-American	68	70	86	104	116	107
Undergraduate	American Indian/Alaska Native	4	6	7	6	4	4
Undergraduate	Asian	3	8	10	9	13	15
Undergraduate	Caucasian/White	558	605	690	752	823	819
Undergraduate	Hispanic/Other	16	19	17	9	7	1
Undergraduate	Native Hawaiian/Pacific Island			1	1	2	3
Undergraduate	Non Resident Alien	6	5	7	17	19	20
Undergraduate	Other	8	6	2	1	1	1
Undergraduate	Two or more races	41	31	44	46	56	54
Undergraduate	Unknown	31	39	36	32	33	33
Undergraduate	Total	735	789	900	977	1,074	1,057
	<i>Memo: Minority Subtotal</i>	<i>140</i>	<i>140</i>	<i>167</i>	<i>176</i>	<i>199</i>	<i>185</i>

2015	2016	2017	2018	2019	2020
9.3%	8.9%	9.6%	10.6%	10.8%	10.1%
0.5%	0.8%	0.8%	0.6%	0.4%	0.4%
0.4%	1.0%	1.1%	0.9%	1.2%	1.4%
75.9%	76.7%	76.7%	77.0%	76.6%	77.5%
2.2%	2.4%	1.9%	0.9%	0.7%	0.1%
0.0%	0.0%	0.1%	0.1%	0.2%	0.3%
0.8%	0.6%	0.8%	1.7%	1.8%	1.9%
1.1%	0.8%	0.2%	0.1%	0.1%	0.1%
5.6%	3.9%	4.9%	4.7%	5.2%	5.1%
4.2%	4.9%	4.0%	3.3%	3.1%	3.1%
100.0%	100.0%	100.0%	100.0%	100.0%	100.0%
<i>19.0%</i>	<i>17.7%</i>	<i>18.6%</i>	<i>18.0%</i>	<i>18.5%</i>	<i>17.5%</i>

12-Month Enrollment Splits by Ethnicity - Graduate

Graduate/Professional	Ethnicity	2015	2016	2017	2018	2019	2020
Graduate/Professional	African-American	30	26	19	19	23	23
Graduate/Professional	American Indian/Alaska Native	4	1				1
Graduate/Professional	Asian	9	5	5	3	6	4
Graduate/Professional	Caucasian/White	242	225	260	240	232	204
Graduate/Professional	Hispanic/Other	2	1	1		1	2
Graduate/Professional	Native Hawaiian/Pacific Island						
Graduate/Professional	Non Resident Alien	3	8	11	12	6	4
Graduate/Professional	Other	9	2				1
Graduate/Professional	Two or more races	2	5	7	6	9	10
Graduate/Professional	Unknown	10	46	29	24	30	27
Graduate/Professional	Total	311	319	332	304	307	276
	<i>Memo: Minority Subtotal</i>	<i>56</i>	<i>40</i>	<i>32</i>	<i>28</i>	<i>39</i>	<i>41</i>

2015	2016	2017	2018	2019	2020
9.6%	8.2%	5.7%	6.3%	7.5%	8.3%
1.3%	0.3%	0.0%	0.0%	0.0%	0.4%
2.9%	1.6%	1.5%	1.0%	2.0%	1.4%
77.8%	70.5%	78.3%	78.9%	75.6%	73.9%
0.6%	0.3%	0.3%	0.0%	0.3%	0.7%
1.0%	2.5%	3.3%	3.9%	2.0%	1.4%
2.9%	0.6%	0.0%	0.0%	0.0%	0.4%
0.6%	1.6%	2.1%	2.0%	2.9%	3.6%
3.2%	14.4%	8.7%	7.9%	9.8%	9.8%
100.0%	100.0%	100.0%	100.0%	100.0%	100.0%
<i>18.0%</i>	<i>12.5%</i>	<i>9.6%</i>	<i>9.2%</i>	<i>12.7%</i>	<i>14.9%</i>

12-Month Enrollment Splits by Ethnicity - Combined

Combined	Ethnicity	2015	2016	2017	2018	2019	2020
Combined	African-American	98	96	105	123	139	130
Combined	American Indian/Alaska Native	8	7	7	6	4	5
Combined	Asian	12	13	15	12	19	19
Combined	Caucasian/White	800	830	950	992	1,055	1,023
Combined	Hispanic/Other	18	20	18	9	8	3
Combined	Native Hawaiian/Pacific Island	-	-	1	1	2	3
Combined	Non Resident Alien	9	13	18	29	25	24
Combined	Other	17	8	2	1	1	2
Combined	Two or more races	43	36	51	52	65	64
Combined	Unknown	41	85	65	56	63	60
Total Distinct	Total	1,045	1,108	1,232	1,279	1,380	1,328
	<i>Memo: Minority Subtotal</i>	<i>195</i>	<i>180</i>	<i>199</i>	<i>202</i>	<i>237</i>	<i>221</i>

2015	2016	2017	2018	2019	2020
9.4%	8.7%	8.5%	9.6%	10.1%	9.8%
0.8%	0.6%	0.6%	0.5%	0.3%	0.4%
1.1%	1.2%	1.2%	0.9%	1.4%	1.4%
76.6%	74.9%	77.1%	77.6%	76.4%	77.0%
1.7%	1.8%	1.5%	0.7%	0.6%	0.2%
0.0%	0.0%	0.1%	0.1%	0.1%	0.2%
0.9%	1.2%	1.5%	2.3%	1.8%	1.8%
1.6%	0.7%	0.2%	0.1%	0.1%	0.2%
4.1%	3.2%	4.1%	4.1%	4.7%	4.8%
3.9%	7.7%	5.3%	4.4%	4.6%	4.5%
100.0%	100.0%	100.0%	100.0%	100.0%	100.0%
<i>18.7%</i>	<i>16.2%</i>	<i>16.2%</i>	<i>15.8%</i>	<i>17.2%</i>	<i>16.6%</i>

Enrollment by Pell Eligibility and First Generation

FA Pell Eligibility Indicator	2016	2017	2018	2019	2020
Pell Eligible	234	308	319	370	325
Not Pell Eligible	556	592	659	704	733
Total	790	900	978	1,074	1,058
% Pell Eligible	29.6%	34.2%	32.6%	34.5%	30.7%

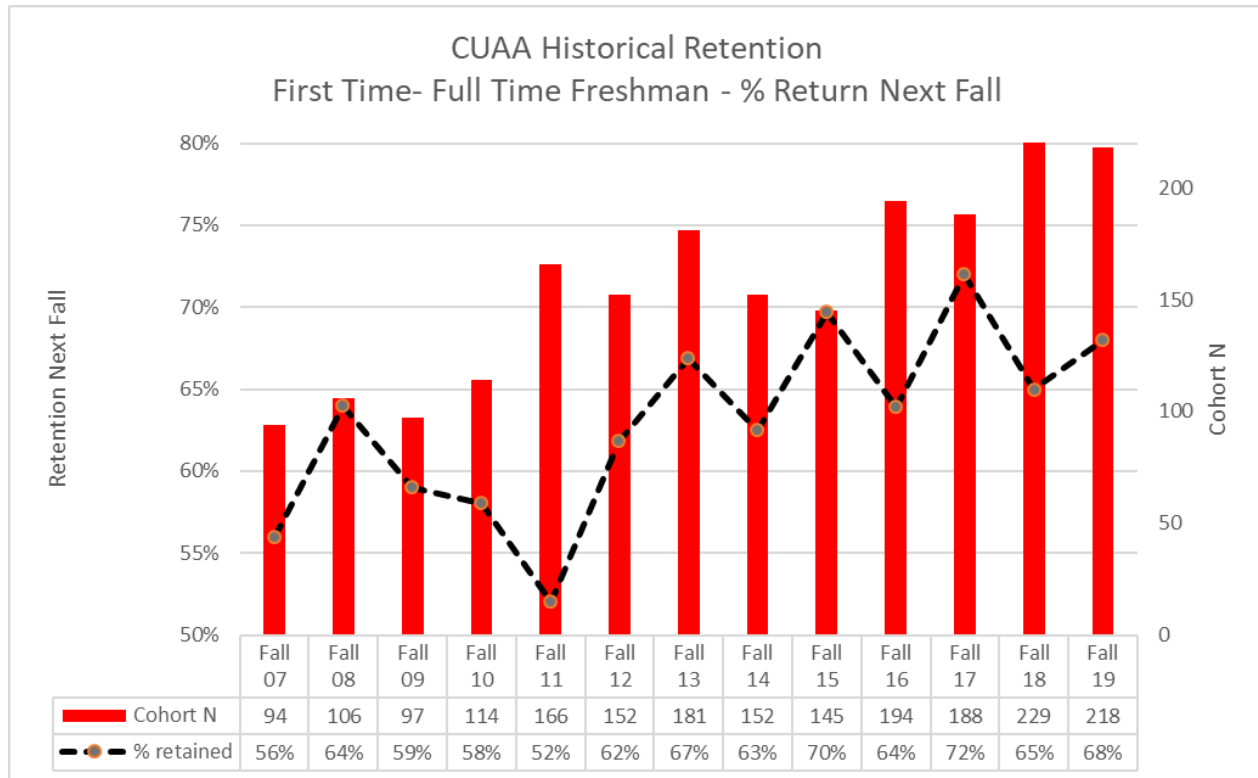
FA ISIR Parental Education Level	2016	2017	2018	2019	2020
First Generation	146	175	202	223	208
Not First Generation	455	553	572	665	640
Other/Unknown	189	172	204	186	210
Total	790	900	978	1,074	1,058
% First Generation	18.5%	19.4%	20.7%	20.8%	19.7%

FA ISIR Parental Education Level	FA Pell Eligibility Indicator	2016	2017	2018	2019	2020
First Generation	Pell Eligible	77	94	107	131	107
First Generation	Not Pell Eligible	69	81	95	92	101
Not First Generation	Pell Eligible	152	203	197	232	210
Not First Generation	Not Pell Eligible	303	350	375	433	430
Other/Unknown	Pell Eligible	5	11	15	7	8
Other/Unknown	Not Pell Eligible	184	161	189	179	202
	Total Pell Eligible	234	308	319	370	325
	Total First Generation	146	175	202	223	208

Religious Affiliation by Student Level Type in 2019-20

Religion	Distinct Student Count by Level					% by Student Level				
	All Student Levels	Under graduate	Traditional Under graduate	High School	Graduate	All Student Levels	Under graduate	Traditional Under graduate	High School	Graduate
Christian	1,177	945	828	117	236	88.6%	89.4%	88.5%	96.7%	85.5%
Lutheran	306	262	222	40	46	23.0%	24.8%	23.7%	33.1%	16.7%
Lutheran-Missouri	238	211	182	29	29	17.9%	20.0%	19.4%	24.0%	10.5%
Lutheran-ELCA	15	9	9		6	1.1%	0.9%	1.0%	0.0%	2.2%
Lutheran-Wisconsin	24	20	11	9	4	1.8%	1.9%	1.2%	7.4%	1.4%
Other Christian	871	683	606	77	190	65.6%	64.6%	64.7%	63.6%	68.8%
Baptist	73	61	54	7	13	5.5%	5.8%	5.8%	5.8%	4.7%
Episcopal	6	2	2		4	0.5%	0.2%	0.2%	0.0%	1.4%
Pentecostal	15	12	12		3	1.1%	1.1%	1.3%	0.0%	1.1%
Presbyterian	30	23	20	3	7	2.3%	2.2%	2.1%	2.5%	2.5%
Roman Catholic	169	124	114	10	45	12.7%	11.7%	12.2%	8.3%	16.3%
United Church of Christ	4	1	1		3	0.3%	0.1%	0.1%	0.0%	1.1%
Non-Christian	36	23	23		13	2.7%	2.2%	2.5%	0.0%	4.7%
Unknown	115	89	85	4	27	8.7%	8.4%	9.1%	3.3%	9.8%

New Freshman Retention Next Fall

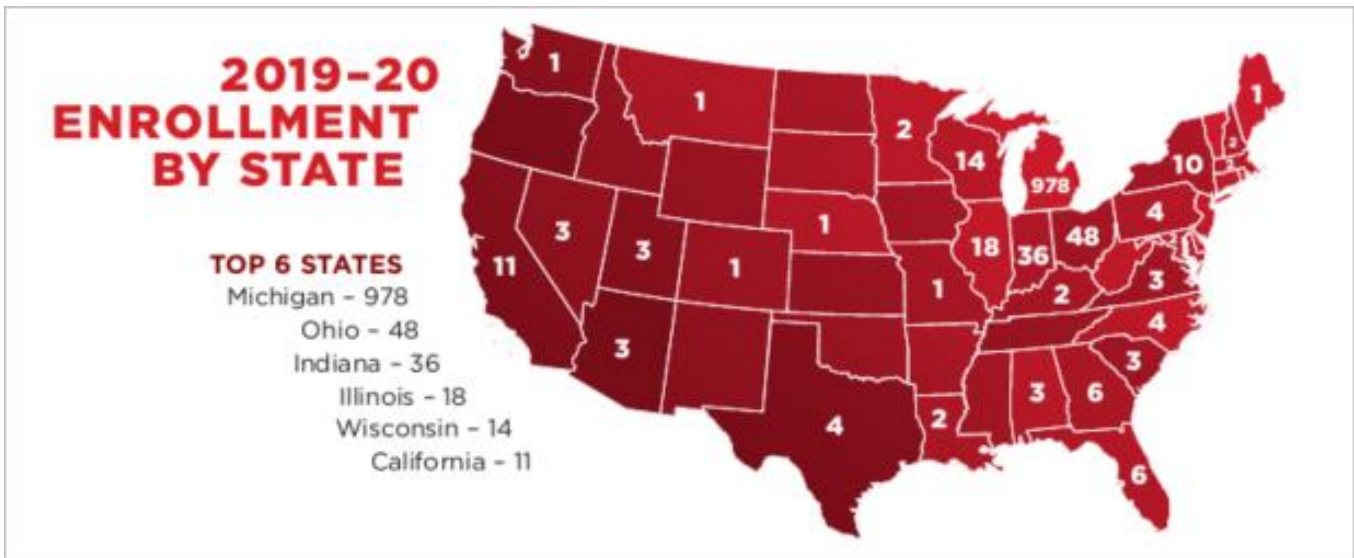


Upgrades to academics and student programs resulting from the strategic partnership formed with Concordia University Wisconsin in the early part of the decade led directly to improvements in student retention, most commonly measured by the percentage of New Freshman in a Fall cohort that returned to CUAA the following fall. Improved retention has positively impacted the number of degrees conferred annually and the 4-year and 6-year graduation rates (see page 11).

Enrollment by State

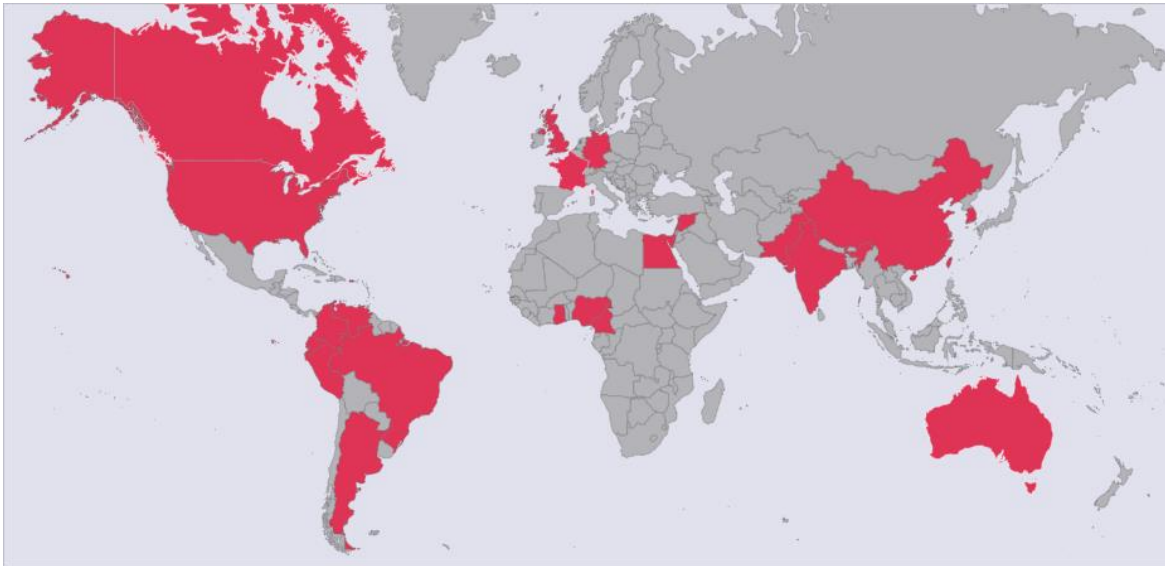
Concordia means “Hearts Together”

Our Community Comes Together from Around the Country
and Around the World



	2016	2017	2018	2019	2020		2016	2017	2018	2019	2020	
Grand Totals	890	1,039	1,072	1,196	1,175		Louisiana	1		1	5	2
Michigan	770	913	909	1,018	978		Maryland	2	2	1	1	2
Ohio	36	33	46	45	48		Massachusetts			1	2	2
Indiana	22	20	34	33	36		Minnesota	3	2	4	1	2
Illinois	10	13	13	15	18		New Hampshire				1	2
Wisconsin	9	13	14	16	14		Colorado					1
California	11	12	10	11	11		Maine	1	2	2	1	1
New York	2	4	5	7	10		Missouri	1	3	5	2	1
Florida	2	1	1	2	6		Montana					1
Georgia	1	1	1	6	6		Nebraska	1	1	1	1	1
North Carolina		1	1	2	4		Washington	2	1	1	1	1
Pennsylvania	2	1		3	4		Alaska					1
Texas	2	4	1		4		Iowa	2	3	3	1	
Alabama		1	1	1	3		Kansas	1				
Arizona	1	1	3	2	3		New Jersey	2				
Nevada	2	2	2	5	3		Oklahoma					1
South Carolina	1	1	2	2	3		Oregon	1	1	1	1	
Utah				2	3		Rhode Island			1		
Virginia			1	3	3		Tennessee		2	6	2	
Kentucky	1				2		West Virginia	1	1	1	1	

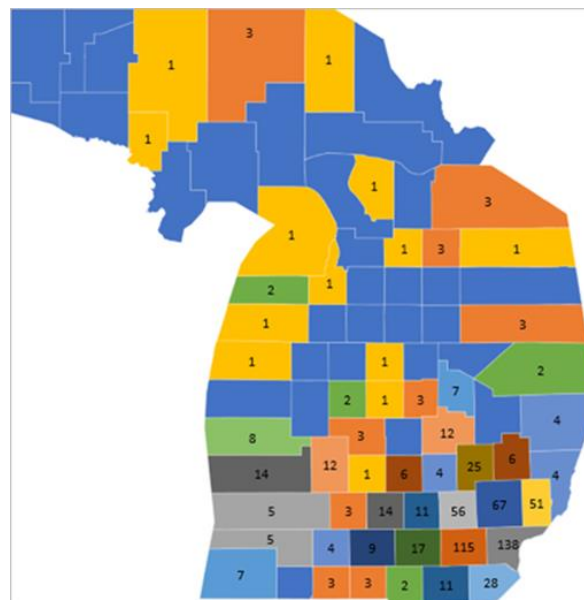
Enrollment by Country of Citizenship



Country	2013-14	2014-15	2015-16	2016-17	2017-18	2018-19	2019-20	2020-21
Argentina			1	1				
Australia						1	1	1
Brazil	1	1	1	1		1	1	
Cameroon			1					
Canada	5	8	8	6	3	4		1
China		3	3	4	4	6	4	4
Colombia							1	
Ecuador							4	4
Egypt	1	1	1	1				
France							1	2
Germany		1						
Ghana	1	1	1					
Greece								1
India			5	7	7	2	1	
Israel								1
Lebanon	1	1	1					
Nigeria					2		1	1
Pakistan						2	2	2
Peru	1	1						
South Korea	1							
Syrian Arab Repub						1		
Taiwan (ROC)					1		1	
United Kingdom	1	1	1	1	1	1	1	
Venezuela			1	1	2	2	1	2
Grand Totals	12	18	24	22	20	20	19	19

Enrollment by Michigan County

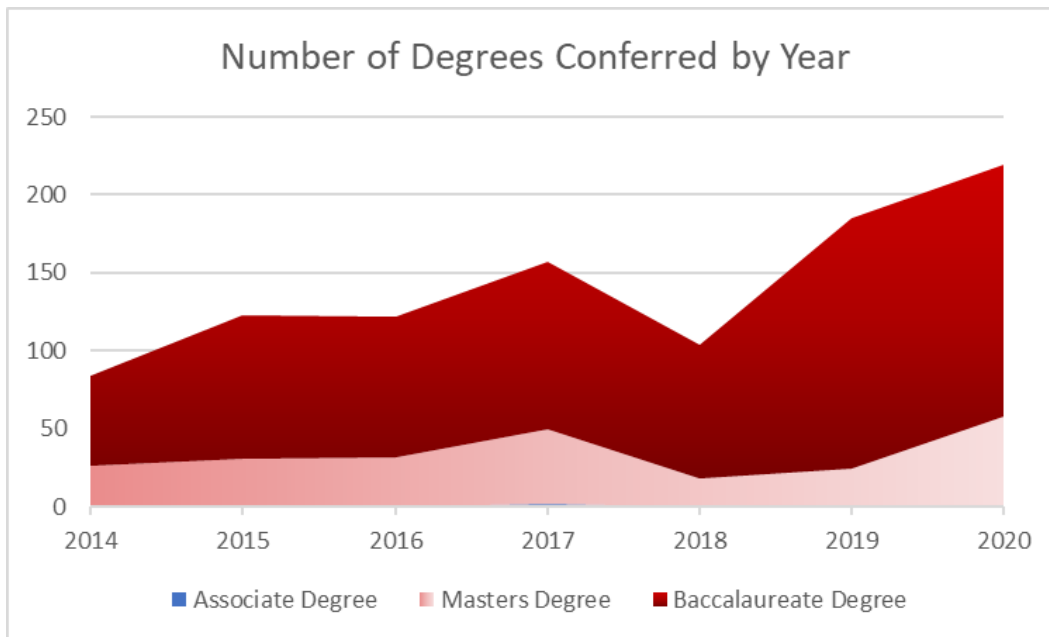
County	2015	2016	2017	2018	2019	2020	County	2015	2016	2017	2018	2019	2020
Alger, MI	6	4	4	6	4	7	Lapeer, MI	4	6	4	5	10	13
Allegan, MI	2	7	14	6	7	9	Leelanau, MI				2	2	3
Alpena, MI		2	2	2	2	1	Lenawee, MI	28	17	20	19	22	19
Antrim, MI	2						Livingston, MI	63	67	113	67	71	96
Barry, MI		2	4	3	5	6	Luce, MI					1	1
Bay, MI	10	7	8	10	14	13	Mackinac, MI			3			
Benzie, MI	5	2			1	3	Macomb, MI	66	56	69	57	87	95
Berrien, MI	7	4	7	9	12	14	Manistee, MI	9	5	4	3	2	2
Branch, MI	1	1	3	4	5	5	Marquette, MI		2	2	2		2
Calhoun, MI	5	11	12	11	17	16	Mason, MI	2	2		2		2
Cass, MI	1		4	2			Mecosta, MI	3	2	2	2	3	4
Charlevoix, MI	5	2	5		2		Midland, MI	5	6	9	4	1	7
Cheboygan, MI	2	6					Monroe, MI	75	57	59	33	49	47
Clare, MI	2					2	Montcalm, MI	2	1		1	6	5
Clinton, MI	8	6	9	9	12	10	Montmorency, MI					6	5
Delta, MI	2				3		Muskegon, MI	15	15	16	10	12	17
Dickinson, MI						2	Newaygo, MI	3		2			
Eaton, MI	10	9	20	13	24	30	Oakland, MI	120	130	151	135	136	115
Emmet, MI	3	3	4			1	Ogemaw, MI	2			3		
Genesee, MI	42	36	35	26	47	42	Osceola, MI	2					
Gladwin, MI	2	5	4				Otsego, MI	3	3	4	6	5	3
Grand Traverse, MI			2	2	2	3	Ottawa, MI	12	14	20	11	21	25
Gratiot, MI	2	1			1		Presque Isle, MI	3	2			1	6
Hillsdale, MI	4	2	2	2	5	4	Saginaw, MI	42	42	31	22	29	20
Huron, MI			2	2	2	4	Saint Clair, MI	15	13	10	11	12	7
Ingham, MI	21	22	24	22	18	21	Saint Joseph, MI	7	4	6	4	4	3
Ionia, MI				6	4	2	Sanilac, MI	4	2	8	3	7	6
Iosco, MI	2	2	2	2	2	6	Shiawassee, MI	3	1	4	8	6	7
Isabella, MI				1	2	2	Tuscola, MI	17	12	13	9	5	2
Jackson, MI	19	15	22	18	17	33	Van Buren, MI	12	7	10	8	13	9
Kalamazoo, MI	10	6	15	10	12	7	Washtenaw, MI	209	210	319	204	246	221
Kalkaska, MI	1						Wayne, MI	229	224	292	205	243	247
Kent, MI	27	21	15	13	12	19	Wexford, MI	4	3				
Lake, MI						2							



Degrees Conferred by Academic Year, 2014 - Present

Concordia's students at all levels are finishing what they start at historically high levels. CUAA's count of Baccalaureate and Masters degrees conferred has been trending steadily and significantly upward.

Degrees Conferred	2014	2015	2016	2017	2018	2019	2020
Associate Degree		1		2			
Masters Degree	26	30	32	48	18	24	58
Baccalaureate Degree	58	92	90	107	86	161	161
Total	84	123	122	157	104	185	219

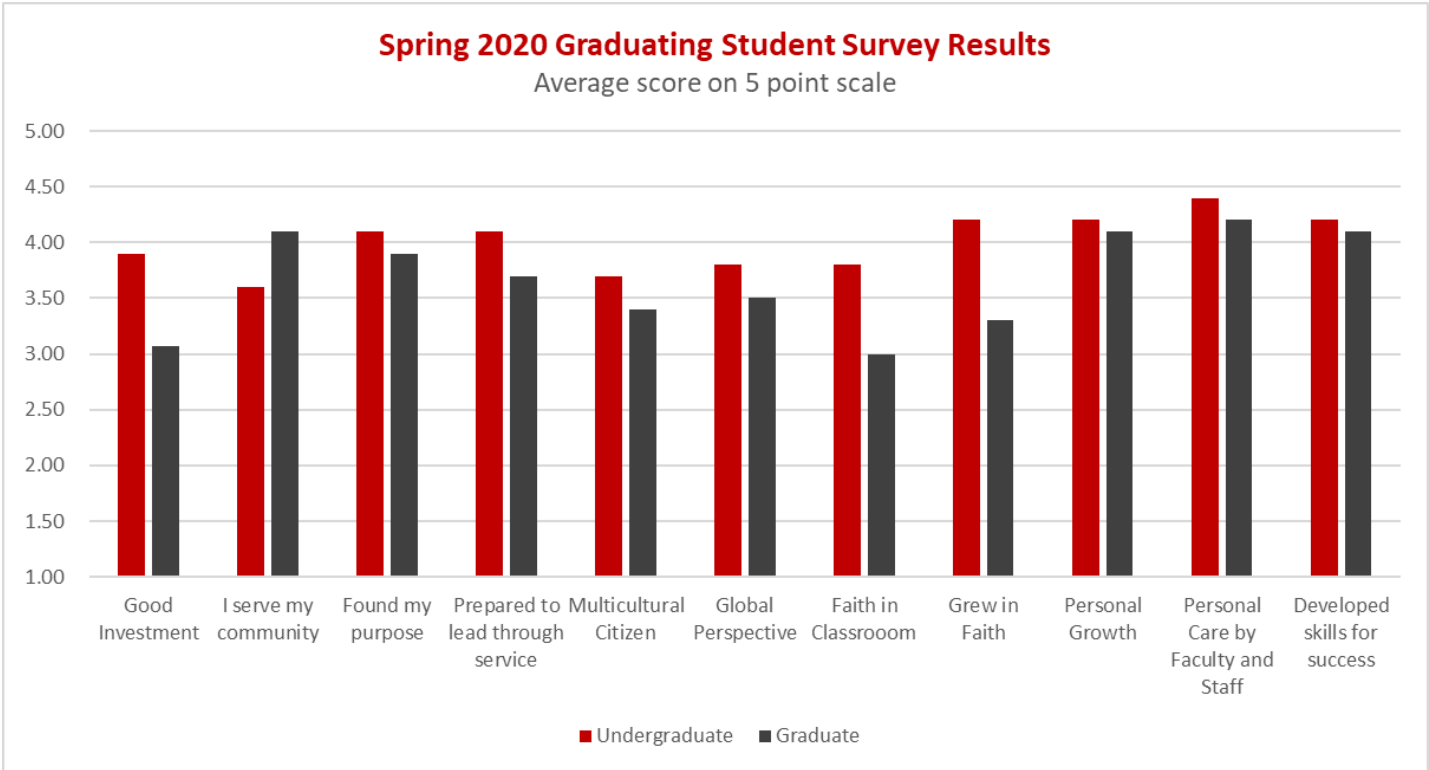


4-Year and 6-Year Graduation Rates

Graduation rates are called a trailing indicator, because they measure the percentage of New Freshmen from a given cohort who earned a degree in four or six years. CUAA's graduation rate has been relatively low due to the turnover and transfers at the time of the merger with CUW. Since that time, the focus on academics and programs has produced an increasing number of graduates each year that will raise the graduation rate as each cohort matriculates. The official national average graduation rate for public colleges and universities is 33% (4-year) and 57% 6-year). Private school averages are 53% (4-year) and 65% (6-year). Given the positive trends in both Retention and Degrees Conferred, CUAA is on track to meet and exceed national averages.

New Freshman Cohort	4-Year Graduation Rate	6-Year Graduation Rate
Fall 2013 (201410)	27.30%	41.90%
Fall 2014 (201510)	33.10%	49.70%
Fall 2015 (201610)	35.80%	48.20%

Student Feedback – All Graduate Survey Spring 2020



Graduate Survey - Undergrad Response Trend 2018-20

